

The **Binary**

●

27 COPPERFIELD STREET

SE1



The Building

Design-led. Stylish. Characterful. Exceptional.

The Binary. A fully redeveloped design-led office that makes a bold statement. A building by Fabrix and designed by Soda Studio. A smart building for smart people. A Shoreditch vibe with Southbank elan.

Located in lively Copperfield Street. In touch with everything the South Bank has to offer. Flat Iron Square, Union Street Arches and Bankside.

Just one floor remains available of 1,307 sq ft, allowing an occupancy of 15 people.

Specification

Let there be light

Beautifully large windows naturally illuminate the workspace. When the day gets dim, turn on the sustainable suspended LED luminaries.

Let there be height

Lofty floor to ceiling height of 3.3m. No access ramps. No suspended ceilings. Serious head space for heads that think free.

Breathe easy

VRF air conditioning technology with zonal control and windows that actually open. Fresh air to encourage fresh thinking.

Clean and green

Superloos with hand basins, wall-mounted pans, showers, vanity mirrors and hand dryers. Painted and ceramic surfaces. Secure cycle parking in the West Yard area.

Always on

High-speed fibre optic broadband is already connected. So you'll be too.

Fabrix purposefully repurposing

Why knock down when you can refit. No need for needless landfill. Cut down on CO2 emissions and retain many original features. Simple, effective thinking.





WE
THE
T

LOCATION

The Area

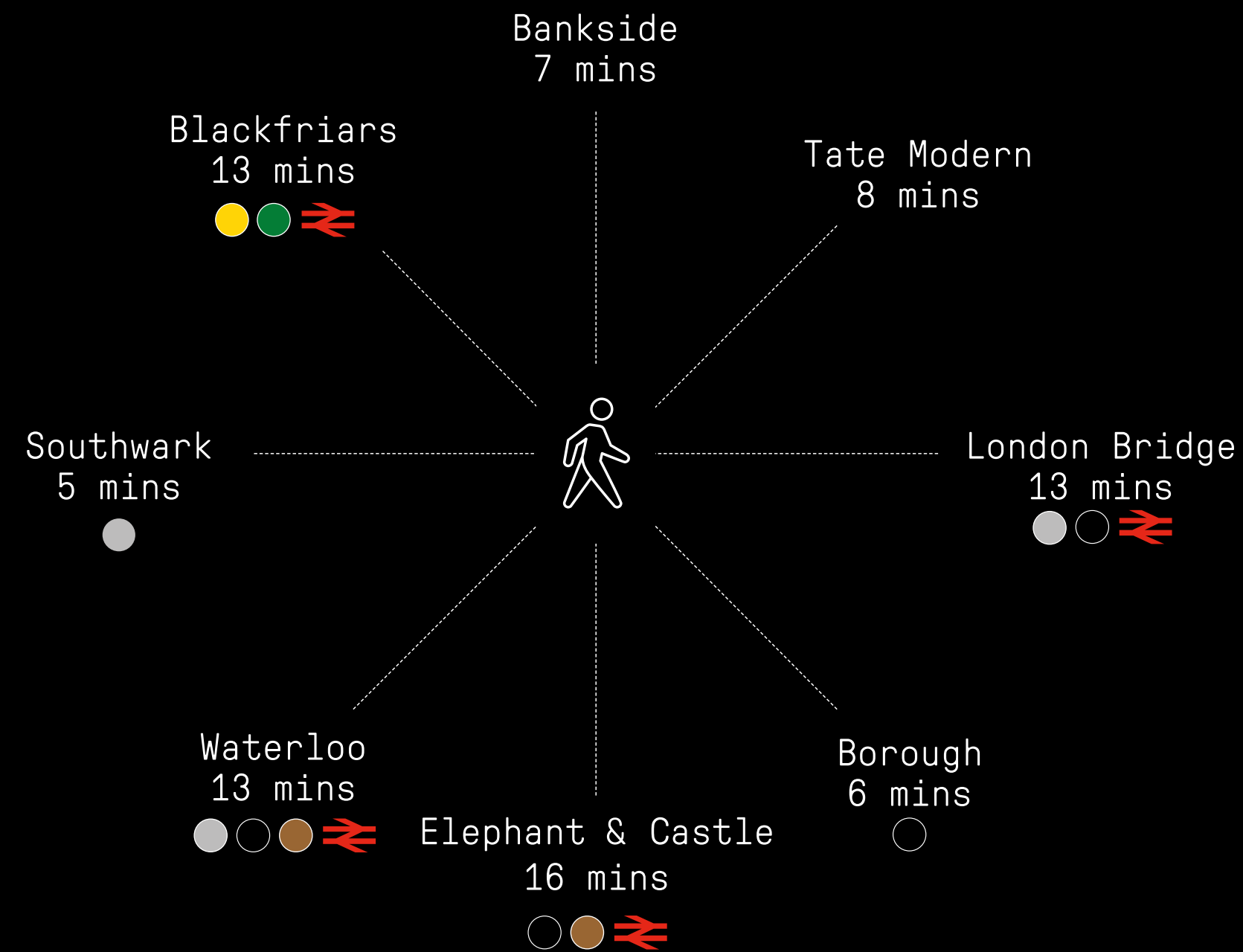
Immerse yourself in the South Bank and feed your mind with its heady cultural mix of theatres both classic and new, (Old and Young Vic), as well as the Tate, Jerwood art galleries and the Africa Art Centre just over the road.

Feed your body with its vibrant food and drinks scene. Taste artisan coffee shops, sample destination bars and eat in acclaimed restaurants, all within easy walking distance.

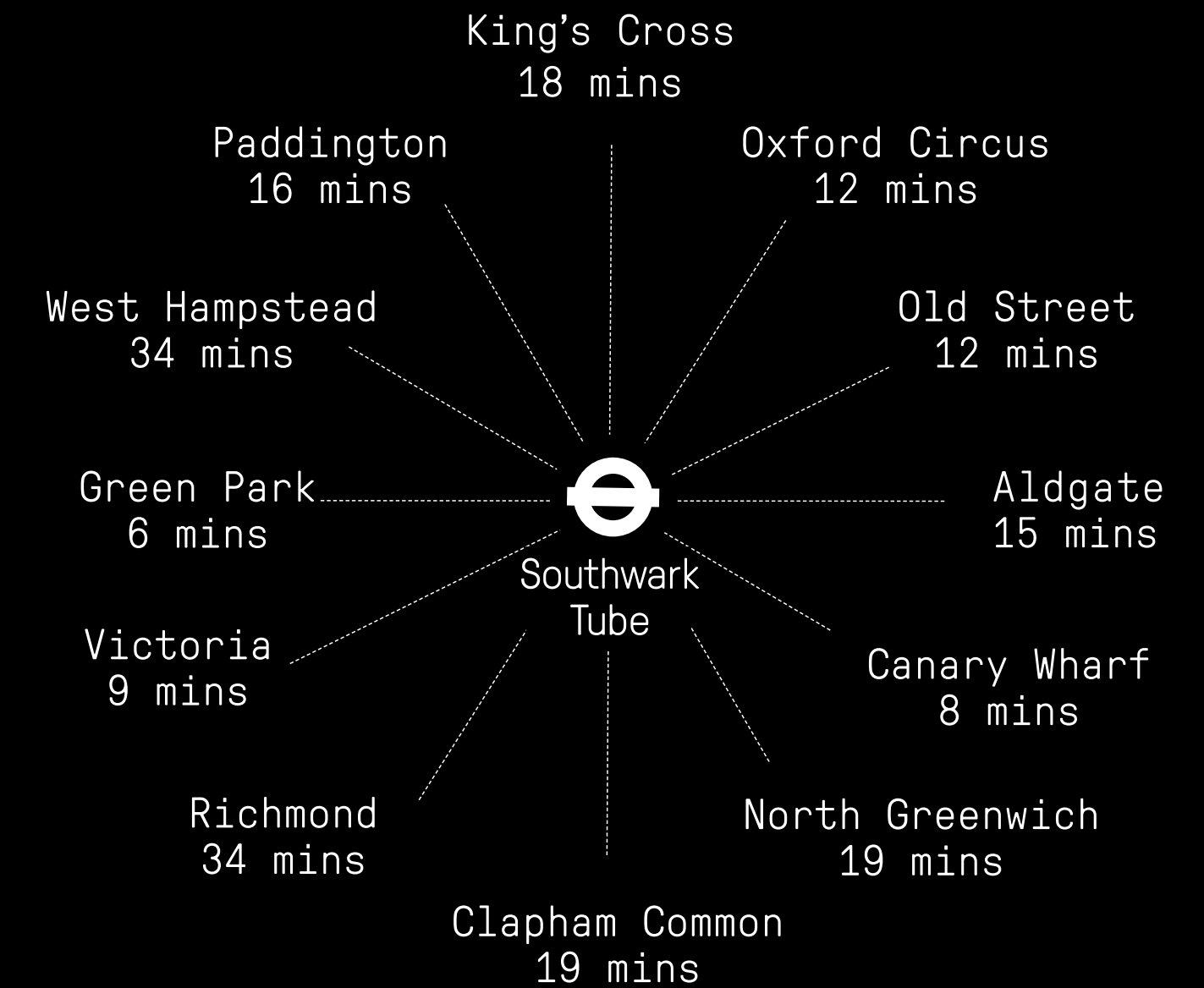
From experimental street food to Michelin starred chefs there's something to suit any occasion. Flat Iron Square, Old Union Yard Arches all offer a host of exciting new food outlets.v

Nearby Connections

Walking Distances



Tube Travel Times

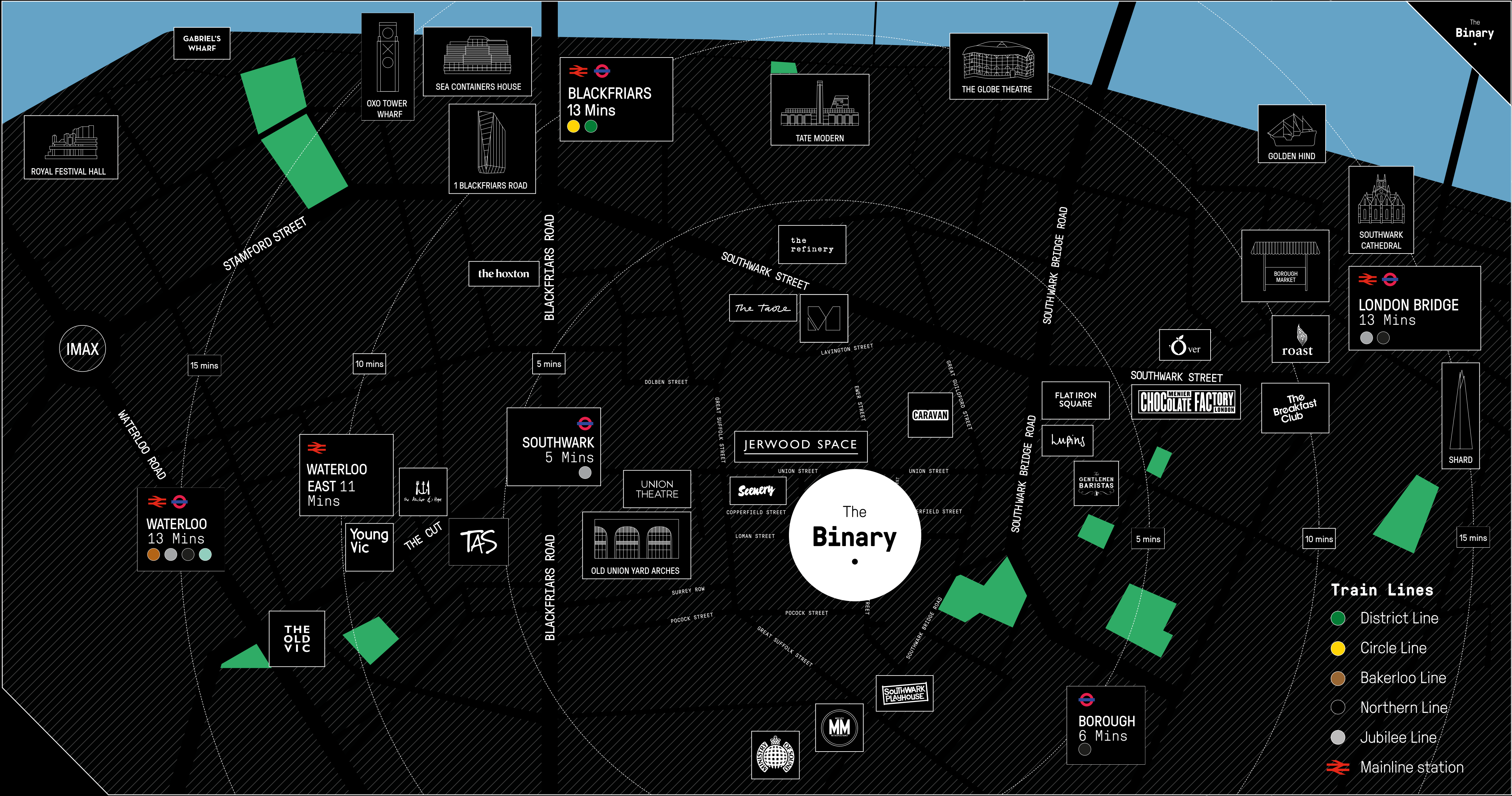


Journey time to Airports



Train Lines

- | | |
|-----------------|--------------------|
| ● District Line | ○ Northern Line |
| ● Circle Line | ● Jubilee Line |
| ● Bakerloo Line | ➤ Mainline station |



Local Occupiers

Cheil

WPP

The Restaurant Group plc

The Garden

mediaocean

News UK

OMG OMNICOM MEDIA GROUP

FOLD7

LEON. NATURALLY FAST FOOD

FINANCIAL TIMES

tp bennett

IBM

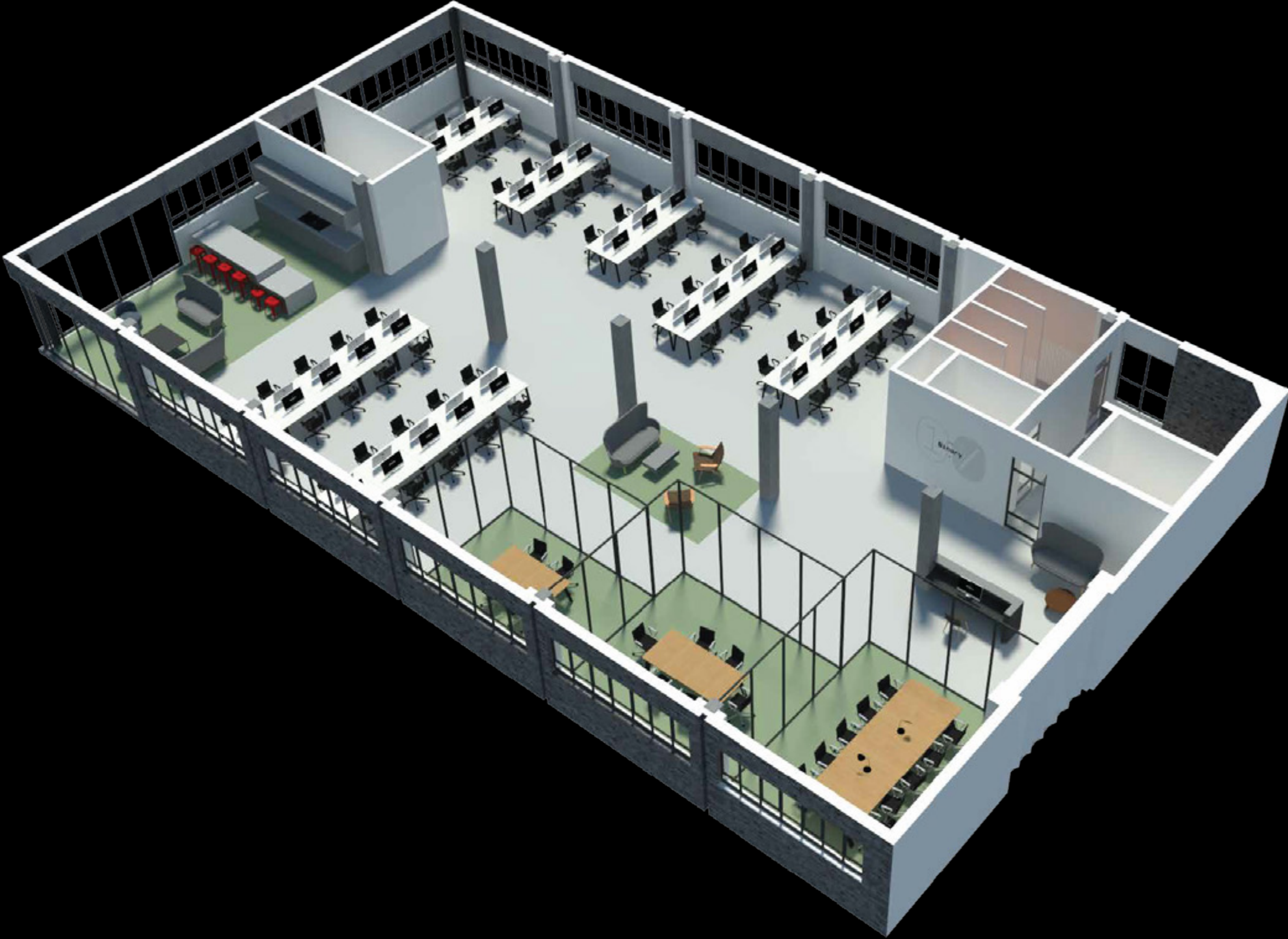


FLOOR

PLANS

Indicative Space Plan

Part first Floor - 1,307 Sq Ft



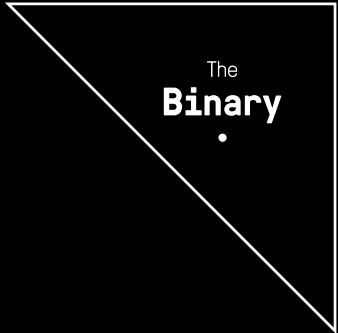
- 18x Open plan desks
- 1x 8 person meeting room
- 1x 6 person meeting room
- 1x 4 person meeting room
- 1x Breakout area

Total occupancy 18



For indicative purposes only.
Not to scale.

Olwen House: Facilities Specifications



Occupancy Levels

- Occupancy levels designed to 1 person/8m2 which equates to 18 people on the 1st floor.

Structure

- The existing beams and soffits have been retained, repaired and refinished to compliment the aesthetic of the space.

Floor to Ceiling Heights

- On all floors the height is maximised by the omission of raised access floors and suspended ceilings. The office benefits from a maximum floor to ceiling height of 3.5m.

Facade & Glazing

- The existing brick facades have been repaired and refinished in banded contrasting paintwork and the Crittall-type windows have been overhauled and redecorated. The ground floor has received a new glazed polyester powder coated ‘shopfront’ and the upper levels boast new openable glazing panels for an amazing view of the Shard.

Lifts

- A goods/passenger lift has been refurbished to suit the aesthetic of the building, with eight person occupancy, travelling between ground and second floors, which are also serviced by two staircases.

W.C.’s & Shower Facilities

- All W.C.’s are ‘superloos’ with hand basins and wall mounted pans, vanity mirrors and hand dryers. The materials reflect the character of the building with painted and ceramic surfaces. The shower is an individual room with private changing area.

Servicing

- Refuse storage is located externally to the rear of the building on the ground floor. Plant areas are located at second floor level above the secondary staircase. An area of the plant room has a demised space for tenants’ equipment.

Office CAT A

- Exposed painted brickwork feature walls.
- Exposed exposed concrete columns, beams and soffits which reflect the character of the building.
- Exposed ceiling mounted services.
- Glazed/partially glazed facades.
- Capped off services ready for installation of a tea point.

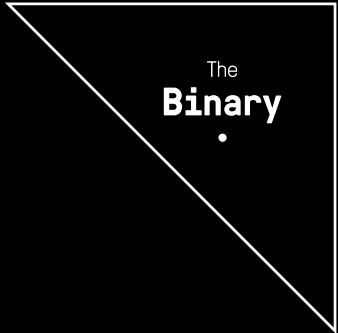
Building Reception

- The ground floor of the building provides a reception and communal space.

Cycle Provision

- There is cucle storage within the courtyard area for tenant use.

Olwen House: Facilities Specifications



Mechanical Services

- All areas are air conditioned using a VRF system with zonal control. Heat rejection occurs via a roof mounted cooling plant.
- Extract is provided to the office toilet and shower areas.
- Dedicated tenant plant areas have been provided at roof level.

Public Health Services

- Potable boosted cold water service is provided to all drinking water outlets and sanitaryware cold water connections. Soil and waste systems are provided to take the discharge of foul and waste water from all sanitaryware and fitments.

Electrical Services

- The floor has a dedicated distribution board and is metered to monitor small power and lighting consumption.

Lighting

- Beautiful, large windows naturally illuminate the workspace. When the day gets dim, turn on to sustainable suspended LED luminaries. The lighting is controlled by means of a programmable control system. This enables the lighting layout to be easily reconfigured for partitioning works without major alterations. Recessed LED lighting is used throughout W.C.'s and changing areas.

- Architectural and feature LED lighting to reception area.
- External lighting and location identifying signage.

Access & Security Systems

Video entrance system.

CONTACT US

FABRIX

Terms

Upon request.

Viewings

Through joint-sole
letting agents.



INGLEBY TRICE.
INVEST WELL . WORK WELL

Olivia Stapleton

jhd@inglebytrice.co.uk 0207
029 3610

Luke Austerberry

la@unionstreetpartners.co.uk
07921 406 291

Jonty Robinson

j.robinson@inglebytrice.co.uk
07748 654 997

Francis Cundell

f.cundell@inglebytrice.co.uk
07939 598 545

Subject to contract. Union Street Partners and Ingleby Trice for themselves and the vendor of this property give notice that these particulars do not form, or form part of, any offer or contract. They are intended to give fair description of the property and whilst every effort has been made to ensure their accuracy this cannot be guaranteed. Any intending purchaser must therefore satisfy themselves by inspection or otherwise. Neither Union Street Partners, nor any of its employees, has any authority to make or give any further representations or warranty whatsoever in relation to this property. All prices and rents quoted are net of VAT. August 2025.